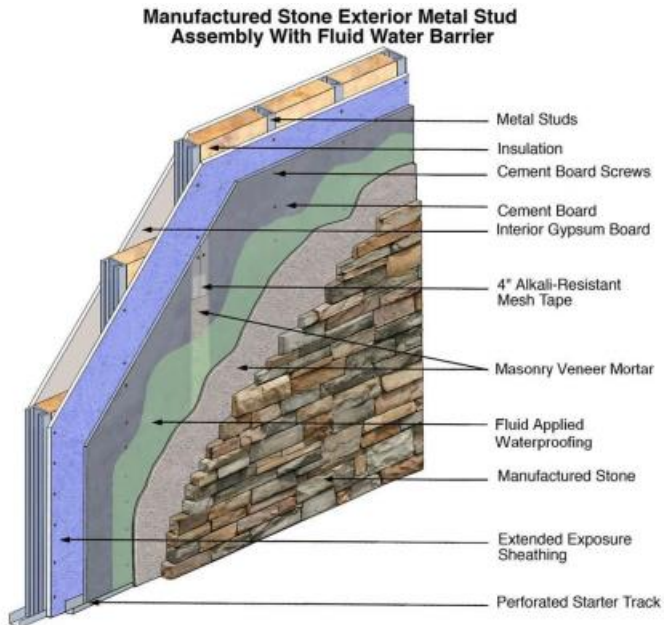




MASONRY VENEER INSTALLATION SYSTEM (MVIS™)

MVIS WARRANTED SYSTEM & MASONRY APPLICATION BENEFITS: BENEFITS & INSTALLATION VIDEOS

MVIS WEB PORTAL: <https://laticrete.com/en/masonry-veneer-installation-system>



THE BENEFITS OF LATICRETE MVIS

Masonry Veneer Installation System

1. **WARRANTIES: 25 Year (Concrete/CMU) or 15 Year (Frame) Labor & Material** for Installation of Thin Stone and Brick. Architectural Details Available.
2. **Water & Air Barrier – Fluid-Applied to Substrate Exterior AND Allows Bond to Mortar and Stone/Brick**, Load Bearing. Crack Isolation. Quick Curing (2 Coats (Allows Placement of TAMV Within an Hour Typically.) Helps Keep Dry Substrate. (Covers WRB Penetrations. Accommodates Continuous Insulation.)
3. **Mortar Bond to Substrate – 6-10X Stronger Shear Bond** than Type S Mortar, the MVIS Mortar Shear Bond Often Stronger Than Substrate Itself. **Tintable Pointing & Adhesive Mortars - PermaColor Select**
4. **Labor Savings: Typically 20% or More**, [PermaBase® Cement Backer Board](#) (15 Year Warranty) v. Scratch/Lath. Better Productivity.
5. **Warranted Even With Total Installed Cost Similar to Legacy Method**
6. **Clean, Bucket-Based Mixing: Water and Powder Only (Bag Mix)**, Virtually No Waste: **Exterior:** Façade, Foundation, Fireplace, **Interior:** Fireplace and Walls, **Hardscape:** Retaining Walls, Pavers, Outdoor Kitchen, Fire Pit, Fireplace.
7. **Adjustable Bond, 5-7 Mins, Pot Life up to 4 Hrs Non-Sag Mortars Available.**

LATICRETE MVIS **15 Year System Warranty For Steel or Wood Framed Exterior Facades (USA and Canada)**

<https://cdn.laticrete.com/~//media/support-and-downloads/warranties/ds23015.ashx?la=en&vs=1&d=20170822T145311Z>

LATICRETE MVIS 25 Year System Warranty (United States and Canada)

<https://cdn.laticrete.com/~media/support-and-downloads/warranties/ds0250.ashx?la=en&vs=1&d=20180213T201620Z>

LATICRETE MVIS Introduction Presentation Link:

[MVIS INTRODUCTION AND OVERVIEW SOUTHEAST 060818.pptx](#)

LATICRETE MVIS Installation Videos: 21:21 Minutes Total

Cement Backer Board Inst. 3:21Mn <https://www.youtube.com/watch?v=l7qAq983ALc&feature=youtu.be>

MVIS Air and Water Barrier Application 5:44Mn <https://www.youtube.com/watch?v=syuXOPZaRLY>

Part 1: MVIS Introduction and Job Site Basics 2:35Mn <https://www.youtube.com/watch?v=AITGj9nivgE>

Part 2: MVIS Adhesive Mortar Mixing 2:22Mn https://www.youtube.com/watch?v=QQHlr_T0LYY

Part 3: MVIS Thin Brick Installation Methods 2:22Mn <https://www.youtube.com/watch?v=Si5bOjBuGE>

Part 4: MVIS Masonry Installation Method for Adhering Stone 4:57Mn

<https://www.youtube.com/watch?v=17o4Yg6YobE>

LATICRETE MVIS INTRODUCTION, 10 mins, Presentation for Masons & Architects, Including Primary Installation.

http://www.youtube.com/watch?v=5AqFZP246_s

Video Minutes

0:00 Introduction / Problems With Scratch-Lath

3:30 MVIS Warranty & Orientation

4:48 MVIS Installation Procedure

9:33 MVIS Summary

Eldorado Stone: INTERIOR WALL, How to Install Over PermaBase® Cement Backer Board, 6:25 mins,

Good Summary of MVIS/CBB Basics. *Air and Water Barrier* and *Masonry Veneer Mortar* (Non-Sag)

<http://www.youtube.com/watch?v=Aodb4VDwf8>

ArrisCraft International: Installing ArrisCraft ARRIS.stack on Concrete, 6:37 mins. Good Summary of *Air and*

Water Barrier Installation With *Anti-Fracture Fabric* & *Latapoxy Waterproof Flashing Mortar* (ArrisCraft utilizes *Hi-Bond Masonry Veneer Mortar* – (which slips and will require spacers for modular (ArrisTile) installations with pointed joints).

<http://www.youtube.com/watch?v=-sHKllsPSLw>

TINTABLE With PermaColor Select Pigments <https://laticrete.com/tile-and-stone-installation/grouts/cementitious-grouts/permacolor-select>

- POINTING MORTAR (9 Colors PreMixed, 40 Standard), MVIS Pointing Mortar, Base: Bright White <https://laticrete.com/masonry-veneer-installation-system/pointing-mortars/mvis-pointing-mortar>
- BONDING/ADHESIVE MORTAR, (2 Colors Premixed, 40 Standard), MVIS Lightweight Mortar, Base: White <https://laticrete.com/en/masonry-veneer-installation-system/adhesives/adhesives/mvis-lightweight-mortar> Grey MVIS Bonding/Adhesive Mortars Also Available; MVIS Veneer Mortar, MVIS Thin Brick Mortar, and MVIS Hi-Bond Mortar.

MVIS PARTNER: NATIONAL GYPSUM – PermaBase® CEMENT BACKER BOARD



MASONRY VENEER INSTALLATION SYSTEM (MVIS™)

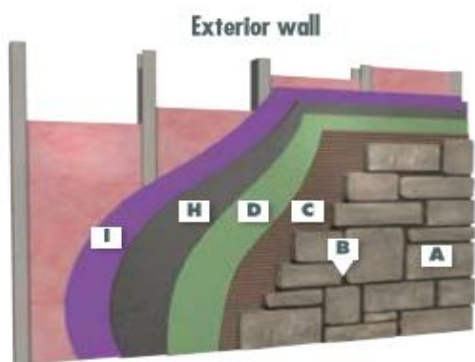
Detail Legend

- A** Adhered Masonry Veneer
- B** MVIS™ Pointing Mortar
- C** MVIS Veneer Mortar ^
- D** MVIS Air & Water Barrier

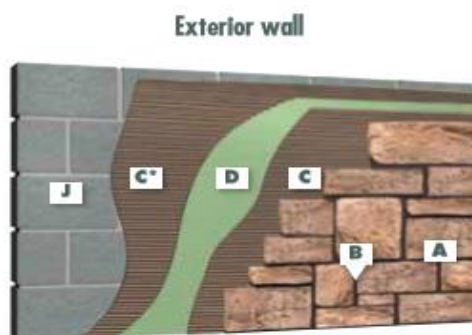
- E** MVIS Premium Mortar Bed
- F** Metal Lath, 3.4# galvanized diamond wire lath
- G** Vapor retarder/cleavage membrane type and location per design professional (e.g. 15 lb builders felt or 4 mil polyethylene sheeting)

- H** Cement backer board (exterior grade)
- I** Exterior rated sheathing
- J** Concrete or masonry

^ United States Patent No.: 6,784,229 B2 (and other Patents).

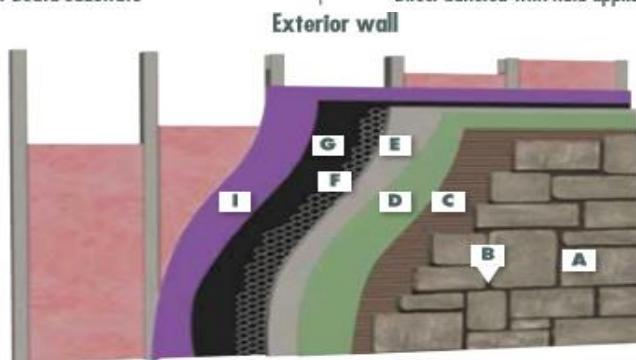


Framed wall with exterior rated sheathing — cement backer board substrate



*Optional if needed to fill voids in block.

Concrete Masonry Unit (CMU) wall with skim coat — Direct adhered with fluid applied MVIS™ Air & Water Barrier



Framed wall with exterior rated sheathing — lath with scratch and brown coat



MVIS PARTNERS



George I. Dodson, CSI
 Technical Sales Representative, Piedmont (NC, SC, GA, and TN-E)
 Laticrete International, Inc.
 Raleigh, NC Office
 Mobile: 203 464-8779,
 Email: gidodson@laticrete.com